

CORBY
OF WINDSOR



DESIGNED FOR HOTELS

RELAX, IT'S COVERED

3
YEAR
ELECTRICAL
GUARANTEE



CORBY
Of WINDSOR

Terms and Conditions Apply: 3 Year Electrical Guarantee applies to all mains operated electrical items only. This covers failure due to electrical defects and does not cover wear and tear due to excessive use. The 3 Year Electrical Guarantee is applied automatically at purchase, no sign up required. For the full list of Terms and Conditions please visit www.corbyofwindsor.com

CONTENTS

03	Introduction A brief overview of who we are and what we are about.	05	Our Story Our story from where we started and a timeline of our company milestones.
07	A Culture of Excellence A section all about the values of our team & the excellent global support they offer.	09	What We Do A brief overview of our key design principles and what we do here at Corby of Windsor.
13	Sustainability Focused How we are built towards a more eco friendly and sustainable future.	15	Ironing Explore our garment care collection; safe, durable and timeless by design.
29	Kettles, Espresso Machine & Trays Relax & enjoy our latest hospitality range, where functionality meets elegance.	43	Hair Dryers Our hair dryer collection offers high end luxury alongside eco focused design.
53	Minibars Explore our refreshing minibar collection; designed to fit a variety of spaces.	63	Safes Discover a safer guest experience with our hotel safes collection.
69	Bedroom Items Our bedroom items are the perfect addition to enhance your guests stay.	83	Bathroom Items Unwind with our range of stylish, easy to clean bathroom items.

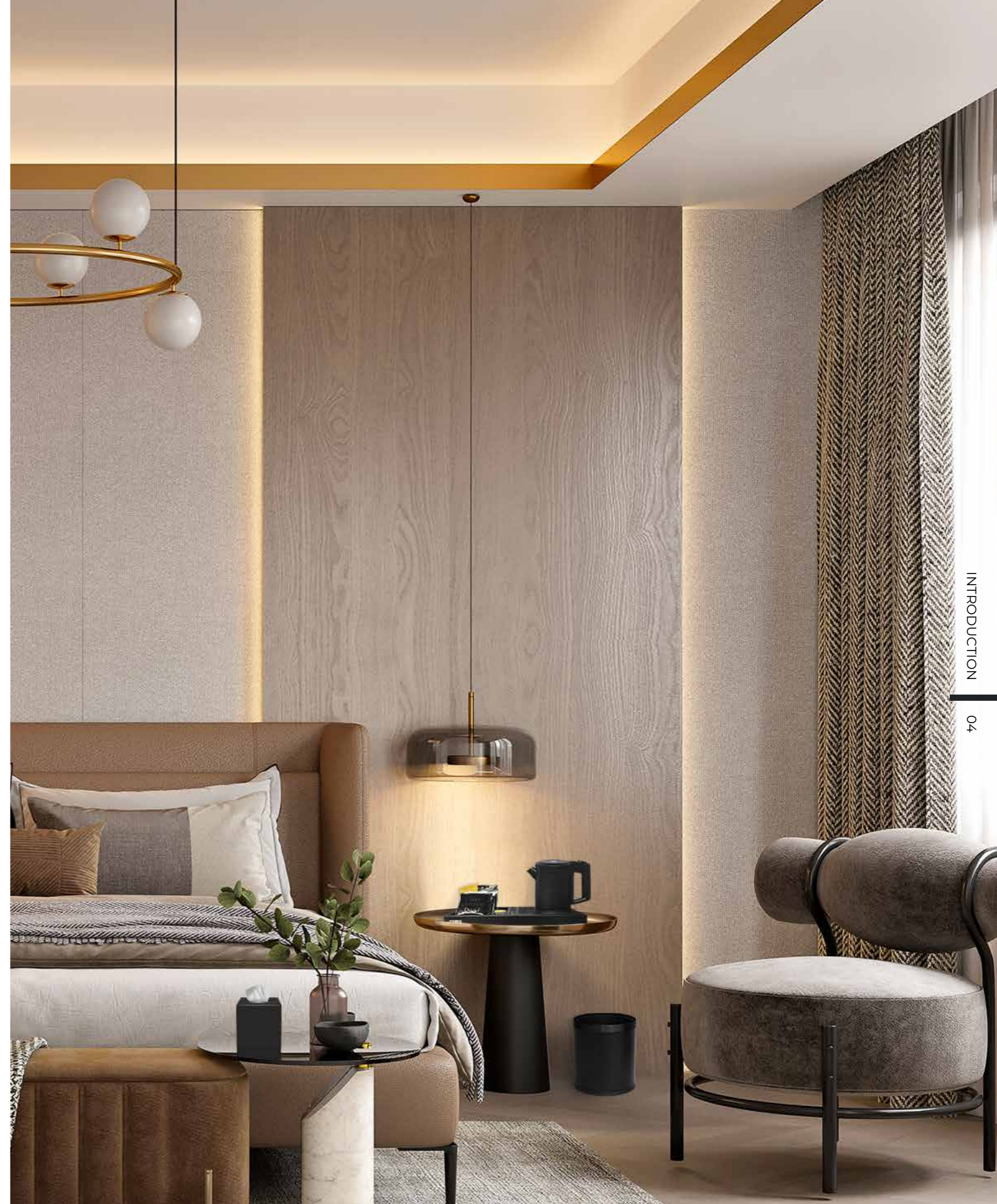
KEY OF SYMBOLS

- New Product
- Eco Friendly
- British Design
- 3 Year Guarantee
- Accessibility Friendly
- Made of BUSA bamboo
- Minimum order quantity

CORBY OF WINDSOR

Specialists in electricals for the hotel guest room

We at Corby of Windsor specialise in the design, manufacture and supply of hotel guest room products. With decades of experience in producing electrical appliances, we have the knowledge necessary to ensure our products are not only produced to a consistent standard but they are also appropriately accredited and certified for the markets they serve. We export to over 60 countries worldwide and are specified in many branded hotel chains.



CORBY OF WINDSOR

Established in 1930

Incorporated originally by Mr John Corby in Windsor in 1930, Corby of Windsor was famous for its garment care products, particularly the trouser press. Over the years, Corby moved into the manufacture of electrical products within the garment care category and became a household name in the 1980s as its products began to be procured by hotels around the world.



In 2009

Corby of Windsor was acquired by Fired Up Corporation

Fired Up Corporation Ltd is a global manufacturer and direct sourcing expert, with multiple factories and distribution centres around the world. Its expertise is within electrical appliances, operating under 10 product brands and producing over 500,000 products per year.



OUR STORY

- | | |
|------|---|
| 1930 | Trouser Press manufacturing begins in Windsor, UK. |
| 1950 | The invention of the worlds first electric trouser press. |
| 1980 | Over 100,000 electric presses sold in one year. |
| 2000 | Corby of Windsor expand the range of hotel electrical products to include irons and ironing centres, kettles and ancillary products. |
| 2009 | Fired Up Corporation purchase Corby of Windsor and utilising its extensive design and production facilities expands the range further, to include minibars, hairdryers, safes and scales. |
| 2010 | A broad range of welcome trays are introduced including the world's first ever drip tray option. |
| 2011 | Global expansion continues and distributors are appointed in the Middle East and Asia. |
| 2012 | Another product first, the 180° iron holding brackets are introduced to our ironing centres. |
| 2015 | Alliances with some of the worlds biggest brands ensure we have a global presence and Corby products are exported to over 60 countries worldwide. |
| 2018 | Collaboration with Nescafé on the Buckingham Compact Welcome Tray. |
| 2021 | Canterbury collection – Over 96 Welcome tray combinations. |
| 2022 | Introduced the worlds highest rated glass door minibar with the Eton E. |
| 2023 | New distribution centre opened in Czechia to service customers in Europe. |
| 2024 | Introduced a range of eco- friendly solutions including the Skye high speed hair dryer as well as the Thornton and Newport recycling collection. |
| 2025 | Introduction of the BUSA - An eco-conscious range of trays and accessories produced in bamboo. |

OUR STORY 06

A CULTURE OF EXCELLENCE

For almost 100 years, Corby of Windsor has been devoted to delivering exceptional service for customers worldwide.

As a leading manufacturing brand in the hotel and hospitality industry, our success depends on the quality of our work, attitude, expertise, innovation and how we treat people. Our dedicated business development and account management team are here to serve you.

In everything we do, our team upholds the following principles;



COMMITMENT

Our brand represents our reputation. We are devoted to maintaining the supply of world-class products and services to our customers worldwide. We strive to build sustainable partnerships that continue to reflect and strengthen the integrity of the Corby of Windsor name.



PASSION

We design, source and manufacture products that are specifically created for the hotel guest room. We rely on customers to help us find the next opportunity, which keeps every relationship fresh and every new project exciting.



EMPATHY

We are receptive to the needs of our customers. Our customers are our eyes, ears and voice in the market and their needs guide our focus.



EXPERTISE

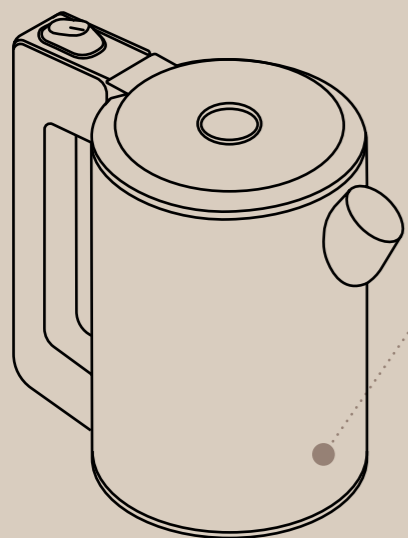
We have vast experience in knowing when, where and how to add value for our customers. Our multicultural, highly-skilled team are trained in design, production and international trade and global supply chain operations to ensure we meet and exceed our customers requirements.



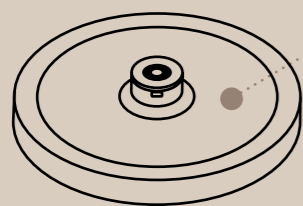
DESIGNED FOR HOTELS

Our UK team of designers have worked with architects, interior designers and furniture manufacturers to create an attractive and versatile range, designed for hotels. We are selective in the materials we use and ensure each product is tested with the hotel and guest in mind.

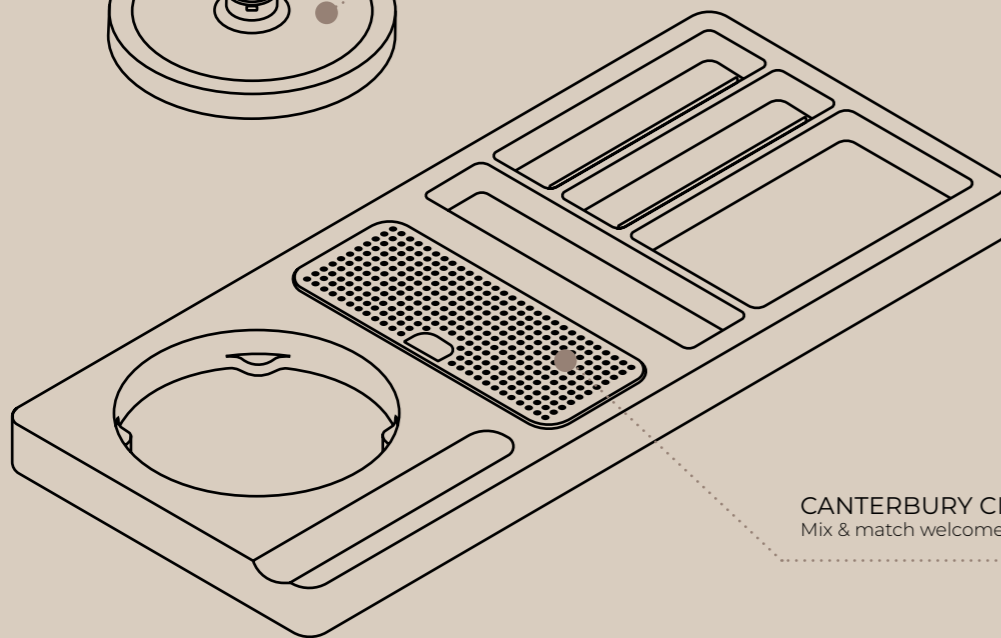
Over the years, we have influenced the industry with our creative thinking and unique safety solutions to set the standard in guest room electricals, and work continuously to evolve our range.



CANTERBURY 0.6L KETTLE
Hotel specific 0.6L kettle design



DUAL KETTLE BASE (0.6L & 1L)
Innovative interchangeable kettle base



CANTERBURY CLASSIC WELCOME TRAY
Mix & match welcome tray design for 0.6L & 1L kettles

STAINLESS STEEL DRIP TRAY
Innovative design introduced in 2009



3 ENGINEERED TO LAST

We look at all aspects of construction, materials and 'life testing' to ensure we have the best products for the market. We understand the needs of the customer and have implemented strict measures throughout the manufacturing process in our factories to ensure our products meet the high standards we set ourselves.

Our 3 Year Guarantee on all electrical products supports this philosophy.



GLOBAL SUPPLY

We have high levels of stockholding and logistics capabilities in UK, EU, USA and China with direct shipping options and stockholding distributors in key growth territories.

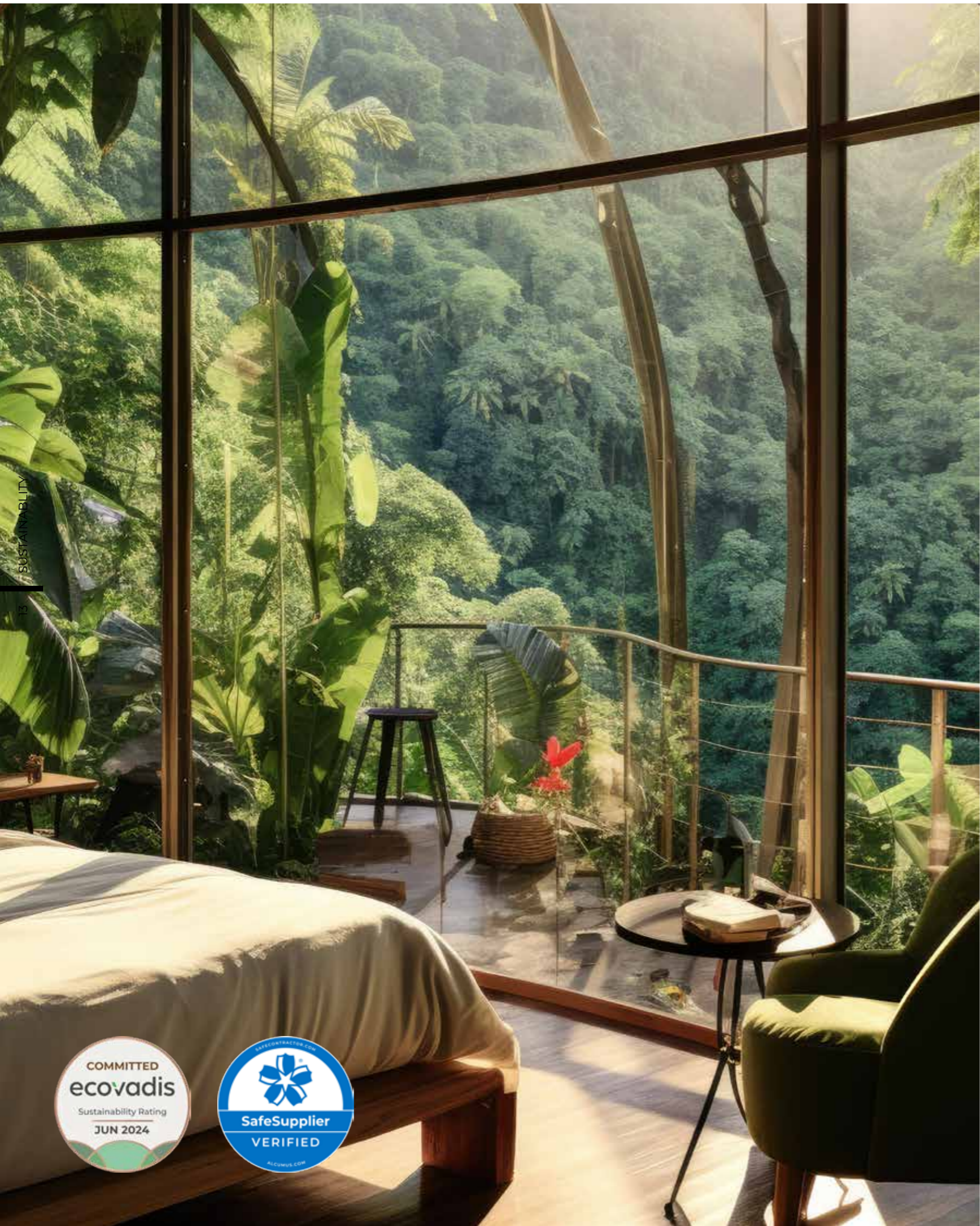
We have significant competence in international certification and accreditation with considerable experience in export and distribution of electrical products worldwide.



HOTEL SPECIFIED

Our specialised range of hotel electricals & accessories is ever-evolving alongside styles & trends we see around the world, which is why we are confident we can accommodate any guest room environment.

This is why our products are specified for many of the world's largest hotel chains, making the introduction to our pre-approved product range a simpler and speedier process.



SUSTAINABILITY FOCUSED

Corby of Windsor recognises the value in identifying and minimising the environmental impact of our products and operations. We remain committed to the continuous improvement of our sustainability performance to protect the planet for current and future generations.

As a designer and producer, we look at all aspects of the product life cycle, from the materials we use to how our products are manufactured. We continue to challenge conventional production methods to better suit the customer & the environment.

In recent years we have:



Improved the assembly process to be more user friendly for local repair. We have also increased the availability of spare parts across the range.



Prevented 82,000 toxic chrome plated items entering the market by finding eco-friendly finishing methods.
*Data taken between 31/8/23 - 1/9/24



Joined the 'Worlds most trusted sustainability business rating' Ecovadis. We are also verified with Alcumus SafeSupplier.



Introduced the Skye hair dryer which dries hair twice as fast whilst using 58% less energy*
*Based on testing against the Bedford 2000W hair dryer



Expanded our range of recycling options to offer up to 22 guestroom waste solutions.



Introduced the BUSA range of trays and accessories, made from the worlds most sustainable material, bamboo.

We have ambitious plans for 2025/26 that will continue to drive change throughout the business and help reduce the impact to the environment within the industry.





CORBY IRONING COLLECTION

As experts in garment care for over 90 years, our specialised range offers attractive solutions that are engineered to be functional, durable & safe. From all-in-one ironing centres to compact ironing boards, we are confident we have the perfect combination to suit your guest room.

SWING INTO ACTION

Originally invented by Corby of Windsor, the 180° iron holder has set the standard in guest room ironing. We have evolved all of our ironing centres to be effortless to use as well as space-saving. We have also revolutionised the manufacturing process for this, reducing the total number of parts required and completely removing the need for chrome plating.



180° ROTATION

SAFE & SECURE

All Corby of Windsor irons are programmed to have a 3-way cut-off feature, so hoteliers have peace of mind if an iron is left unattended. The iron will simply switch off after 30 seconds if left horizontally or 8 minutes if left vertically.

Our all-in-one ironing centres are a great example of form and function. Everything you need is attached to the centre, making ironing safe and convenient. Each centre is fitted with a cable tidy system and an anti-theft device to help prevent irons from being stolen.



3 way cut-off

The Sherwood Iron Collection is programmed with a 3-way cut-off, designed to keep both guests and hoteliers safe if an iron is left unattended.



Anti-theft

All Corby of Windsor ironing centres are fitted with an anti-theft device to help prevent irons being stolen.

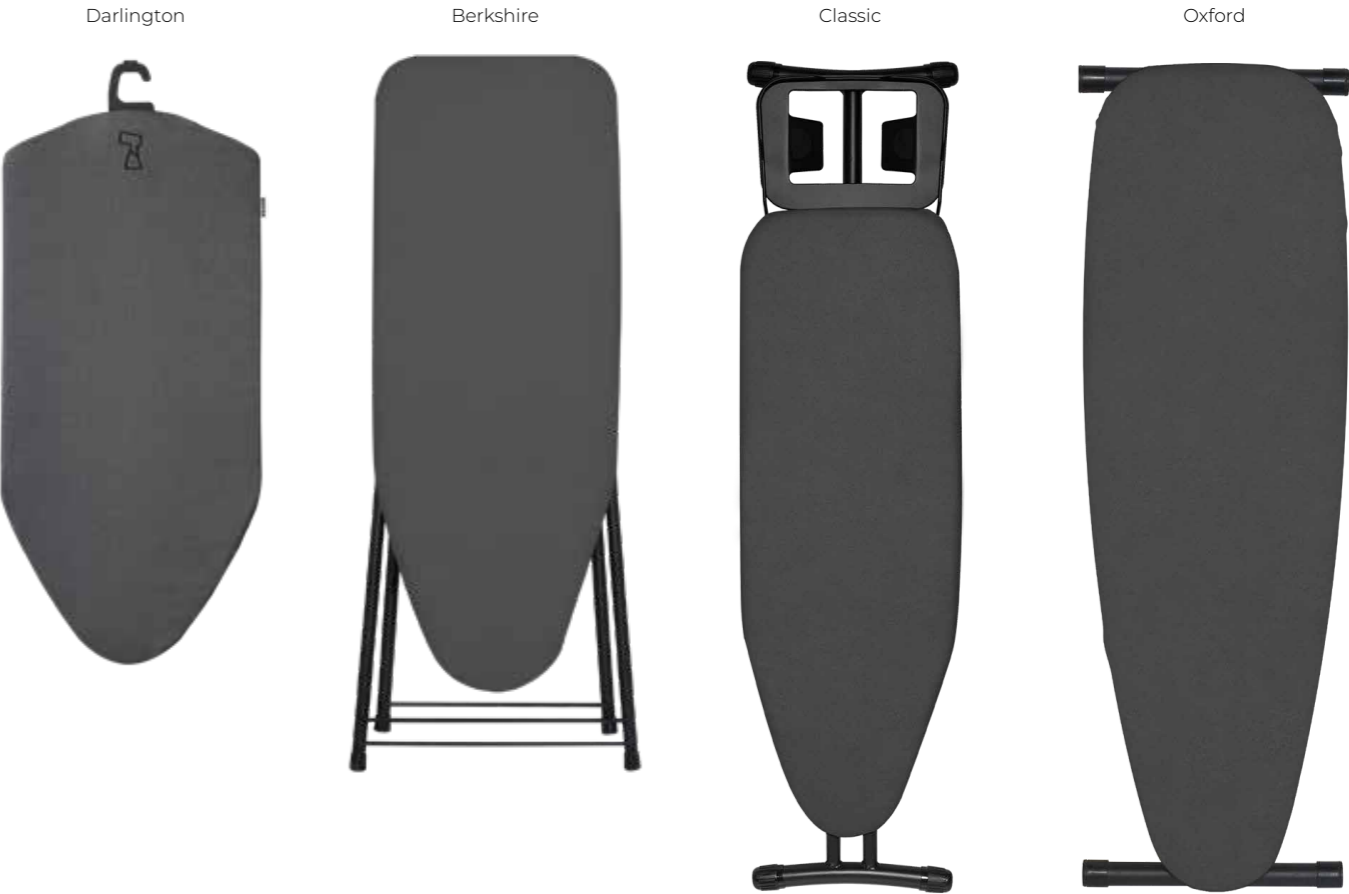


IRONING MADE SIMPLE

With over 200 combinations, ironing couldn't be made easier. Simply select your board or mat, an iron and a storage solution that suits your space. Alternatively, why not choose an all-in-one ironing centre that can be taken straight out of the box and hung onto a clothes rail?

Variety of Ironing Board Sizes

Corby of Windsor have a range of aluminised ironing boards to suit a wide range of hotel spaces.



Darlington Garment Mat

The Corby Darlington Garment Mat is an essential hotel guest room accessory, providing a safe, convenient surface for guests to easily steam or iron their clothes during their stay.



TAILOR MADE SOLUTIONS

Corby of Windsor has been manufacturing quality garment care products since 1930. Our specialised range of hotel electricals & accessories is ever-evolving alongside styles & trends we see around the world, which is why we are confident we can accommodate any guest room environment.

COVER COLOUR OPTIONS

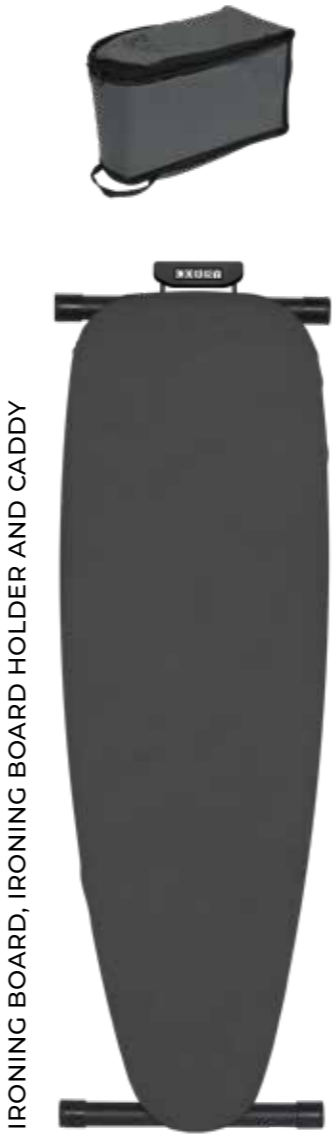


Light Grey Dark Grey

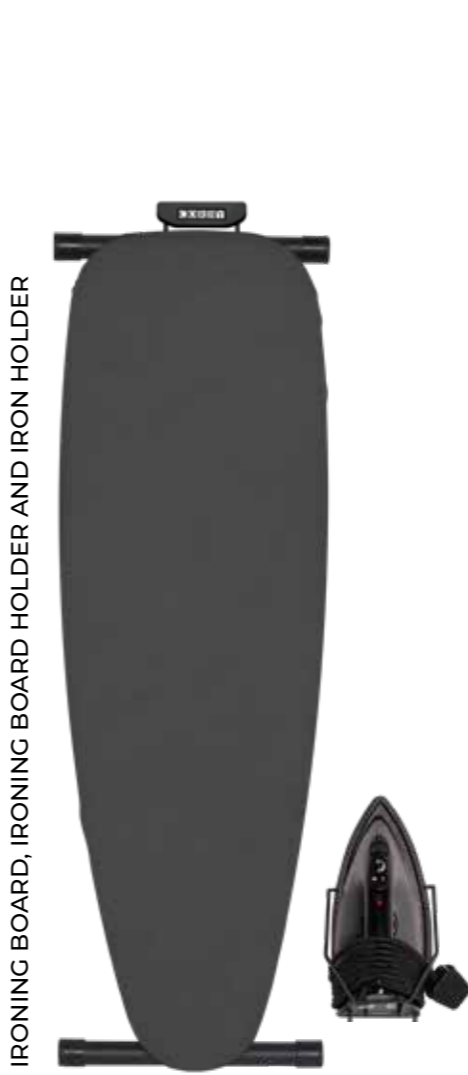


IRONING BOARD WITH HANGER AND CADDY

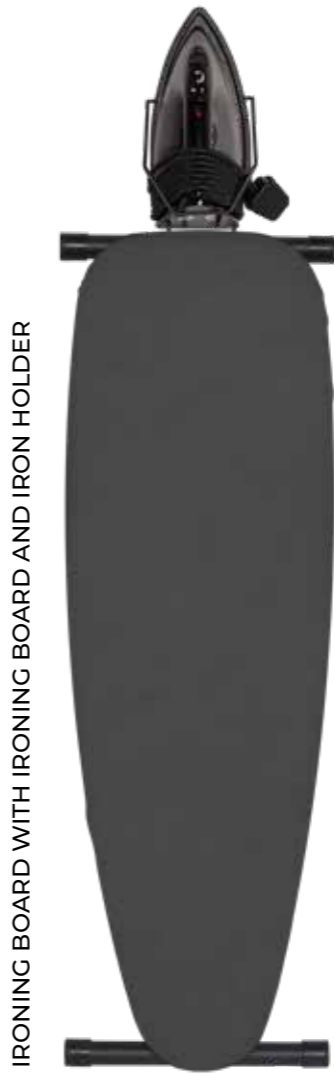
IRONING BOARD WITH HANGER AND IRON HOLDER



IRONING BOARD, IRONING BOARD HOLDER AND CADDY



IRONING BOARD, IRONING BOARD HOLDER AND IRON HOLDER



IRONING BOARD WITH IRONING BOARD AND IRON HOLDER



IRONING CENTRE

CORBY IRONING CENTRES

For effective and safe ironing, our ironing centres are engineered with steam flow mesh boards with burn proof aluminised covers. Our range of ironing centres also feature anti-theft security alongside the original 180° iron holder that has been designed for left and right handed users.

OXFORD PREMIUM IRONING CENTRE



Features:

- Supplied with 2000W iron
- Integrated hanger & cable tidy
- Easy opening mechanism
- Anti-theft security box
- 3 way auto cut off system

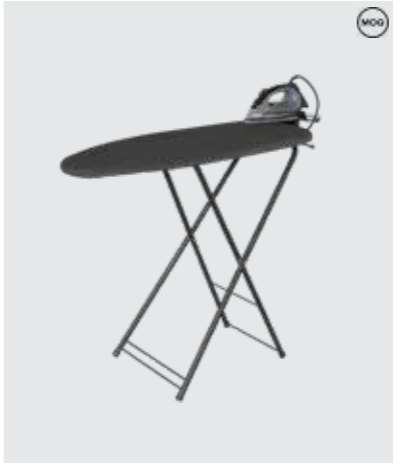
Specification:

Light Grey / Dark Grey
2000W steam iron
5.90kg
330ml tank
3m cable length

Dimensions:

(Board Open)	(Board Closed)
Height - 590 - 840mm	Height - 1270mm
Width - 1015mm	Width - 360mm
Depth - 340mm	Depth - 265mm

BERKSHIRE IRONING CENTRE / Steam



Features:

- Supplied with 1200W iron
- Integrated hanger & cable tidy
- Deck chair opening mechanism
- Anti-theft security box
- 3 way auto cut off system

Specification:

Light Grey / Dark Grey
1200W steam iron
4.80kg
145ml tank
2.5m cable length

Dimensions:

(Board Open)	(Board Closed)
Height - 755mm	Height - 1135mm
Width - 895mm	Width - 400mm
Depth - 340mm	Depth - 210mm

OXFORD IRONING CENTRE / Steam



Features:

- Supplied with 1200W iron
- Integrated hanger & cable tidy
- Easy opening mechanism
- Anti-theft security box
- 3 way auto cut off system

Specification:

Light Grey / Dark Grey
1200W steam iron
5.30kg
145ml tank
2.5m cable length

Dimensions:

(Board Open)	(Board Closed)
Height - 590 - 840mm	Height - 1270mm
Width - 1025mm	Width - 360mm
Depth - 340mm	Depth - 230mm

BERKSHIRE IRONING CENTRE / Dry



Features:

- Supplied with 1200W iron
- Integrated hanger & cable tidy
- Deck chair opening mechanism
- Anti-theft security box
- 3 way auto cut off system

Specification:

Light Grey / Dark Grey
1200W dry iron
4.65kg
2.5m cable length

Dimensions:

(Board Open)	(Board Closed)
Height - 755mm	Height - 1135mm
Width - 895mm	Width - 400mm
Depth - 340mm	Depth - 210mm

OXFORD IRONING CENTRE / Dry



Features:

- Supplied with 1200W iron
- Integrated hanger & cable tidy
- Easy opening mechanism
- Anti-theft security box
- 3 way auto cut off system

Specification:

Light Grey / Dark Grey
1200W dry iron
5.15kg
2.5m cable length

Dimensions:

(Board Open)	(Board Closed)
Height - 590 - 840mm	Height - 1270mm
Width - 1025mm	Width - 360mm
Depth - 340mm	Depth - 230mm

TABLE TOP IRONING CENTRE / Steam



Features:

- Supplied with 1200W iron
- Integrated hanger & cable tidy
- Compact board size
- Anti-theft security box
- Fixed ABS legs

Specification:

Light Grey
1200W steam iron
3.40kg
145ml tank
2.5m cable length

Dimensions:

Height - 250mm
Width - 910mm
Depth - 345mm

TABLE TOP IRONING CENTRE / Dry



Features:

- Supplied with 1200W iron
- Integrated hanger & cable tidy
- Compact board size
- Anti-theft security box
- Fixed ABS legs

Specification:

Light Grey
1200W dry iron
3.25kg
2.5m cable length

Dimensions:

Height - 250mm
Width - 910mm
Depth - 345mm

CORBY IRONING BOARDS & GARMENT MAT

Corby ironing boards are available in a range of sizes and colours. To enhance performance, the ironing boards are engineered with steam flow mesh. The garment mat utilises thick, yet breathable felt that protects furniture surfaces whilst preventing a build up of moisture. Both types are wrapped in replaceable, burn proof aluminised covers that are more effective and safer than conventional options on the market.

OXFORD IRONING BOARD



- Features:**
- Durable powder coated legs and frame
 - Easy open mechanism
 - Lightweight design
 - 7 height positions
 - Burn proof aluminised cover

Specification:
Light Grey / Dark Grey
3.50kg



Compatible with the Ironing Board Hanger.

Dimensions:		
(Board Open)	(Board Closed)	(Board Closed / Hanger)
Height - 590 - 840mm	Height - 1125mm	Height - 1220mm
Width - 1100mm	Width - 360mm	Width - 360mm
Depth - 340mm	Depth - 70mm	Depth - 70mm

CORBY GARMENT MAT

New to the range, the Darlington Garment Mat is an innovative concept that compliments the growing trend of garment steaming. Its versatile design makes it suitable to hang for steaming or lay on a flat surface for ironing.

DARLINGTON GARMENT MAT



- Features:**
- Integrated hook & hanger
 - Double sided garment mat
 - Suitable for ironing & steaming
 - Burn proof aluminised cover
 - Lightweight & slim line design

Specification:
Dark Grey
1.50kg

Dimensions:
Height - 995mm
Width - 420mm
Depth - 60mm

CLASSIC IRONING BOARD



- Features:**
- Durable powder coated legs and frame
 - 7 height positions
 - Easy opening mechanism
 - Lightweight design
 - Built in iron rest
 - Burn proof aluminised cover

Specification:
Light Grey / Dark Grey
3.60kg

Dimensions:	
(Board Open)	(Board Closed)
Height - 995-835mm	Height - 1240mm
Width - 940mm	Width - 360mm
Depth - 330mm	Depth - 65mm

BERKSHIRE IRONING BOARD



- Features:**
- Durable powder coated legs and frame
 - Deck chair mechanism
 - Lightweight design
 - Burn proof aluminised cover

Specification:
Light Grey / Dark Grey
3kg



Compatible with the Ironing Board Hanger.

Dimensions:		
(Board Open)	(Board Closed)	(Board Closed / Hanger)
Height - 755mm	Height - 1000mm	Height - 1115mm
Width - 895mm	Width - 400mm	Width - 400mm
Depth - 340mm	Depth - 50mm	Depth - 50mm



CORBY IRONS

Corby of Windsor offer a range of irons from 1200-2000W. Our irons have been engineered with an auto cut off system (8 mins vertical / 30 seconds horizontal).

CORBY IRONING ACCESSORIES

Corby of Windsor offers a variety of space-saving accessories to keep hotel garment care simple. This range of accessories is specifically designed with the hotel experience in mind by offering both quality and style to any guest room.

STOCKTON GARMENT STEAMER



Features:

- Non stick stainless steel plate
- Continuous steam rate 20-25G
- Trigger activated - 2x steam settings
- 270ml detachable water tank
- Auto cut-off after 1 min

Specification:

Black
1.10kg
1500W
3m cable length

Dimensions:

Height - 295mm
Width - 115mm
Depth - 145mm

SHERWOOD 2000W STEAM IRON



Features:

- Stainless steel soleplate
- Self cleaning function
- Adjustable temperature dial
- Hotel safety iron
- 3 way auto cut-off

Specification:

Black & Grey
1.20kg
2000W
330ml water tank
3m cable length

Dimensions:

Height - 160mm
Width - 290mm
Depth - 117mm

BRIXTON IRON & STEAMER CADDY



Features:

- Heat resistant reinforced base
- Cord tidy storage
- Carry handle
- Suitable for hanging on Corby hooked boards
- Accommodates all Corby irons & the Stockton garment steamer

Specification:

Dark Grey & Black
0.25kg

Dimensions:

Height - 302mm
Width - 302mm
Depth - 22mm

SHERWOOD IRON & IRONING BOARD HOLDER



Features:

- Wall mounted holder
- Concealed fixings
- Rigid & durable construction
- Heat resistant resting plate
- Full sole plate protection
- Accommodates all Corby irons

Specification:

Black
0.30kg - 0.40kg
1200 & 2000W Models

Dimensions:

(1200W)	(2000W)
Height - 335mm	380mm
Width - 130mm	140mm
Depth - 110mm	125mm

SHERWOOD 1200W STEAM IRON



Features:

- Stainless steel soleplate
- Compact & lightweight
- Adjustable temperature dial
- Hotel safety iron
- 3 way auto cut-off

Specification:

Black & Grey / White & Grey
0.75kg
1200W
145ml water tank
2.5m cable length

Dimensions:

Height - 120mm
Width - 250mm
Depth - 105mm

SHERWOOD 1200W DRY IRON



Features:

- Non-stick soleplate
- Compact & lightweight
- Adjustable temperature dial
- Hotel safety iron
- 3 way auto cut-off

Specification:

Black / White
0.60kg
1200W
2.5m cable length

Dimensions:

Height - 120mm
Width - 250mm
Depth - 105mm

SHERWOOD IRONING BOARD HOLDER



Features:

- Wall mounted holder
- Concealed fixings
- Rigid & durable construction
- Accommodates all Corby ironing boards

Specification:

Black
0.10kg

Dimensions:

Height - 90mm
Width - 100mm
Depth - 45mm

IRONING BOARD HANGER



Features:

- Easy to fit
- Suitable for Oxford & Berkshire ironing boards

Specification:

Black
0.20kg

Dimensions:

Height - 186mm
Width - 75mm
Depth - 25mm

IRONING BOARD COVERS



Features:

- Burn proof aluminised cover

Specification:

Light Grey / Dark Grey
0.25kg

Available for:

Oxford
Berkshire
Classic
Table Top (Light Grey ONLY)
Darlington (Dark Grey ONLY)



CORBY ESPRESSO MACHINE, KETTLES & TRAYS

Designed for hotels, our eco friendly kettles & trays are available in a wide range of sizes, finishes and styles. Our welcome trays with their innovative drip tray feature have shaped the industry, providing guests with everything they need to make a relaxing hot drink.

A WARM WELCOME

A warm drink is a great way to start the day. Feel relaxed and assured that Corby of Windsor will not let you down. With decades of experience in designing and manufacturing electrical products for the hotel industry, we understand what our customers require of us; that's why we offer a 3 year guarantee on all electrical products.



British Designed

Our products are designed by our UK based team of product developers in collaboration with international engineering teams. The team examines all aspects of construction, materials and 'life testing' to ensure we have the best possible offering in terms of value & serviceability for hoteliers.

RELAX & SWITCH OFF

Corby kettles have been engineered with world leading Strix Technology. Strix thermal controllers are manufactured to exceed 12,000 cycles of normal operation, so hoteliers & guests will have peace of mind that their kettles will perform.



Strix Technology

Corby kettles are engineered with world leading thermal control technology.




Lift Off Reset

Corby Kettles are fitted with an additional safety system that only allows the kettle to dry boil once. This feature is designed to keep both guests and hoteliers safe if a kettle is left to dry boil unattended.


DESIGNED FOR HOTELS

We understand how a kettle should perform for guests and house keepers, which is why Corby kettles are manufactured with integrated concealed heating elements that are easy to clean and maintain. The Canterbury kettle range has been uniquely designed with an extra wide opening that is easy to fill for guests, but more importantly easy to clean.



 **Wide Opening**
The Canterbury kettle range features an extra wide opening, offering benefits to guests and house keeping.



Anti-Theft 
All corby welcome trays come with an anti-theft security clip so kettles can fit securely to the tray.



Natural Wood Welcome Trays
These are constructed from real hardwood and are available in 3 colours: light wood, dark wood & black.

CORBY KETTLES & ESPRESSO MACHINE

Engineered with world leading thermal control technology, our kettles are available in a range of colours and sizes with matching welcome trays available.

CANTERBURY 0.6L DOUBLE WALLED KETTLE



- Features:**
- Silicone insulation sleeve
 - Push button lid
 - 360° base
 - Concealed heating element
 - Integrated filter
 - Easy to clean
 - Strix thermal controller

Specification:
Brushed Steel / Black
0.90kg
1000W
0.8m cable length

Dimensions:
Height - 158mm
Width - 122mm
Depth - 206mm

CANTERBURY 0.6L KETTLE



- Features:**
- Push button lid
 - 360° base
 - Concealed heating element
 - Integrated filter
 - Easy to clean
 - Strix thermal controller

Specification:
Brushed Steel / Black
0.80kg
1000W
0.8m cable length

Dimensions:
Height - 158mm
Width - 118mm
Depth - 206mm

CANTERBURY 1L KETTLE



- Features:**
- Push button lid
 - 360° base
 - Concealed heating element
 - Integrated filter
 - Easy to clean
 - Strix thermal controller

Specification:
Brushed Steel / Black
0.82kg
1500W
0.8m cable length

Dimensions:
Height - 188mm
Width - 118mm
Depth - 206mm

KENSINGTON 0.6L KETTLE



- Features:**
- Push button lid
 - 360° base
 - Removable filter
 - Strix thermal controller

Specification:
Brushed Steel & Black
0.70kg
1000W
0.7m cable length

Dimensions:
Height - 195mm
Width - 175mm
Depth - 120mm

BUCKINGHAM 1L KETTLE



- Features:**
- 360° base
 - Concealed heating element
 - Removable filter
 - Integrated water level window
 - Strix thermal controller

Specification:
Polished Steel & Black
0.80kg
1250W - 1500W
0.7m cable length

Dimensions:
Height - 210mm
Width - 205mm
Depth - 158mm

LANCASTER 1L KETTLE



- Features:**
- 360° base
 - Concealed heating element
 - Integrated water level window
 - Removable filter
 - Strix thermal controller
 - Matt & gloss finish

Specification:
White / Black
0.70kg
1200W - 1500W
0.7m cable length

Dimensions:
Height - 190mm
Width - 180mm
Depth - 143mm

CAMDEN ESPRESSO MACHINE



- Features:**
- Compatible 'Nespresso Original' styled pods
 - Compact design
 - Italian pump
 - LED control buttons
 - Used capsule compartment

Specification:
Black
2.25kg
1200W
450ml water tank

Dimensions:
Height - 202mm
Width - 310mm
Depth - 83mm

SOHO ESPRESSO CUPS



- Features:**
- Double walled
 - 80ml capacity
 - Easy to clean
 - Dishwasher safe up to 40°

Specification:
Glass
0.06kg

Dimensions:
Height - 62mm
Width - 65mm
Depth - 65mm

CORBY WELCOME TRAYS

Our range of Corby welcome trays feature our signature drip tray that was designed to eliminate the need for saucers, saving time and money in cleaning.

CANTERBURY COMPACT WELCOME TRAYS



Features:

- Accommodates all Corby Canterbury kettles
- Built in sachet holder
- Integrated drip tray
- Anti-theft
- Space saving design
- Rubber feet

Specification:

Light Wood / Dark Wood / Black

0.60kg

Dimensions:

Height - 30mm

Width - 230mm

Depth - 226mm

BUCKINGHAM COMPACT WELCOME TRAYS



Features:

- Accommodates Corby Buckingham kettles
- Built in sachet holder
- Integrated drip tray
- Solid wood
- Anti-theft

Specification:

Light Wood / Dark Wood / Black

0.67kg

Dimensions:

Height - 30mm

Width - 335mm

Depth - 180mm

CANTERBURY CLASSIC WELCOME TRAY



Features:

- Accommodates all Corby Canterbury kettles
- Integrated drip tray
- Integrated spoon tray
- Anti-theft
- Easy to clean

Specification:

Black

0.35kg

Dimensions:

Height - 35mm

Width - 410mm

Depth - 180mm

CANTERBURY DRAWER WELCOME TRAY



Features:

- Accommodates all Corby Canterbury kettles
- Built in drawer sachet holder
- Integrated drip tray
- Integrated spoon tray
- Anti-theft
- Easy to clean

Specification:

Black

1.02kg

Dimensions:

Height - 62mm

Width - 250mm

Depth - 210mm

KENSINGTON DRAWER WELCOME TRAY



Features:

- Accommodates the Corby Kensington 0.6L kettle
- Built in drawer sachet holder
- Integrated drip tray
- Anti-theft
- Easy to clean

Specification:

Black

1.30kg

Dimensions:

Height - 62mm

Width - 245mm

Depth - 200mm

AINTREE WELCOME TRAY



Features:

- Accommodates the Corby Kensington kettles
- Space saving design
- Integrated drip tray
- Anti-theft

Specification:

Black

0.70kg

Dimensions:

Height - 31mm

Width - 230mm

Depth - 230mm

BUCKINGHAM STANDARD WELCOME TRAYS



Features:

- Accommodates Corby Buckingham kettles
- Built in sachet holder
- Integrated drip tray
- Solid wood
- Anti-theft

Specification:

Light Wood / Dark Wood / Black

1.40kg

Dimensions:

Height - 35mm

Width - 460mm

Depth - 200mm

LANCASTER WELCOME TRAY



Features:

- Accommodates all Corby Lancaster kettles
- Anti-theft
- Integrated drip tray
- Sachet holder sold separately

Specification:

Black

0.89kg

Dimensions:

Height - 31mm

Width - 355mm

Depth - 180mm

CORBY HOSPITALITY TRAYS

Our range of Corby hospitality trays are designed to elevate any guest experience. Crafted with attention to detail, each tray combines style and practicality, offering a perfect blend of design and durability.

HIGHLAND LARGE HOSPITALITY TRAY



- Features:**
- Accommodates all Corby kettles, espresso machine, sachet holders & mug trays
 - Luxury PU leather finish
 - Durable PVC construction
 - Raised sides

Specification:
Black
2.68kg

Dimensions:
Height - 45mm
Width - 457mm
Depth - 407mm

HIGHLAND STANDARD HOSPITALITY TRAY



- Features:**
- Accommodates all Corby kettles, espresso machine, sachet holders & mug trays
 - Luxury PU leather finish
 - Durable PVC construction
 - Raised sides

Specification:
Black
2kg

Dimensions:
Height - 45mm
Width - 403mm
Depth - 303mm

EPSOM HOSPITALITY TRAY



- Features:**
- Accommodates all Corby kettles
 - Durable gloss melamine
 - Hard wearing & heat resistant up to 140°C
 - Easy to clean
 - Raised sides

Specification:
Black
0.80kg

Dimensions:
Height - 26mm
Width - 398mm
Depth - 300mm

ASCOT MUG TRAY



- Features:**
- Durable melamine
 - Hard wearing & heat resistant up to 140°C
 - Integrated handles
 - Raised sides

Specification:
Black
0.20kg

Dimensions:
Height - 20mm
Width - 318mm
Depth - 128mm

BUXTON LARGE HOSPITALITY TRAY



- Features:**
- Accommodates all Corby kettles, espresso machine, sachet holders and mug trays
 - Made of BUSA bamboo
 - Matt wood grain finish
 - Raised sides

Specification:
Black
1kg

Dimensions:
Height - 40mm
Width - 450mm
Depth - 400mm

BUXTON STANDARD HOSPITALITY TRAY



- Features:**
- Accommodates all Corby kettles, espresso machine, sachet holders and mug trays
 - Made of BUSA bamboo
 - Matt wood grain finish
 - Raised sides

Specification:
Black
0.71kg

Dimensions:
Height - 40mm
Width - 400mm
Depth - 300mm

BUXTON COMPACT HOSPITALITY TRAY



- Features:**
- Accommodates all Corby kettles
 - Made of BUSA bamboo
 - Matt wood grain finish
 - Built in sachet holders
 - Raised sides

Specification:
Black
0.63kg

Dimensions:
Height - 35mm
Width - 300mm
Depth - 300mm

RICHMOND COMPACT BUTLER TRAY



- Features:**
- Accommodates all Corby kettles, sachet holders and mug trays
 - Solid wood construction
 - Integrated handles
 - Raised sides

Specification:
Black
0.85kg

Dimensions:
Height - 40mm
Width - 420mm
Depth - 320mm



CORBY SACHET HOLDERS

Our range of Corby sachet holders provide a practical solution for keeping your guestroom welcome area neat and organised.

HIGHLAND SACHET HOLDER



- Features:**
- 3 storage compartments
 - Luxury PU leather finish
 - Durable PVC construction

Specification:
Black
0.70kg

Dimensions:
Height - 62mm
Width - 152mm
Depth - 152mm

HIGHLAND COFFEE POD & SACHET HOLDER



- Features:**
- 4 coffee pod compartments
 - 2 storage compartments
 - Luxury PU leather finish
 - Durable PVC construction

Specification:
Black
0.72kg

Dimensions:
Height - 42mm
Width - 217mm
Depth - 151mm

KENSINGTON SACHET HOLDER



- Features:**
- Durable nylon
 - 4 storage compartments
 - Easy to clean
 - Hard wearing & heat resistant up to 140°C

Specification:
Black
0.25kg

Dimensions:
Height - 38mm
Width - 211mm
Depth - 168mm

KINGSTON SACHET HOLDER



- Features:**
- Durable melamine
 - Large storage compartment
 - Easy to clean
 - Hard wearing & heat resistant up to 140°C

Specification:
Black
0.28kg

Dimensions:
Height - 55mm
Width - 200mm
Depth - 75mm

BUXTON SACHET HOLDER



- Features:**
- 3 storage compartments
 - Made of BUSA bamboo
 - Matt wood grain finish

Specification:
Black
0.25kg

Dimensions:
Height - 60mm
Width - 145mm
Depth - 145mm

BUXTON COFFEE POD & SACHET HOLDER



- Features:**
- 4 coffee pod compartments
 - 2 storage compartments
 - Made of BUSA bamboo
 - Matt wood grain finish

Specification:
Black
0.25kg

Dimensions:
Height - 40mm
Width - 210mm
Depth - 145mm

MIDDLETON SACHET HOLDER



- Features:**
- ABS
 - 4 storage compartments
 - Rubber feet
 - Easy to clean

Specification:
Black
0.10kg

Dimensions:
Height - 55mm
Width - 125mm
Depth - 75mm

THAME SACHET HOLDER

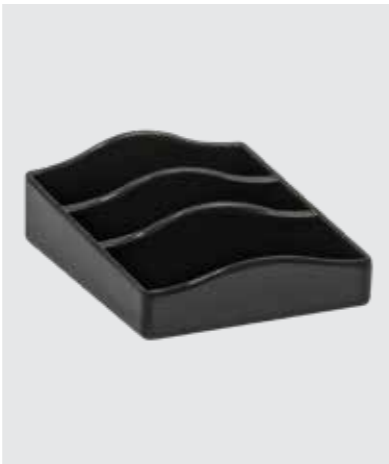


- Features:**
- Durable melamine
 - 3 storage compartments
 - Easy to clean
 - Hard wearing & heat resistant up to 140°C

Specification:
Black
0.15kg

Dimensions:
Height - 45mm
Width - 150mm
Depth - 100mm

ASCOT SACHET HOLDER



- Features:**
- Durable melamine
 - 3 storage compartments
 - Easy to clean
 - Hard wearing & heat resistant up to 140°C

Specification:
Black
0.10kg

Dimensions:
Height - 40mm
Width - 95mm
Depth - 125mm





CORBY HAIR DRYER

Designed for guest safety, our range of stylish & functional hair dryers are available in a variety of colours, styles and specifications. Why not combine them with one of our storage solutions? Designed for different applications, our holders and bags protect the hairdryer whilst being a stylish addition to the room's aesthetic.

ICONIC & IONIC

As a 90 year old brand, it's important to keep up with ever changing trends & technology. Ionic technology provides a more effective way to dry all hair types. The negative ionic charge helps retain moisture, resulting in smoother, healthier looking hair with less frizz.



Ionic Technology
Ionic technology provides a more effective way to dry all hair types.



YOU'RE IN CONTROL

With up to 2000W of hand-held power & heat, it's important that hair dryers are used correctly. Unfortunately, not all guests feel the same way, which is why Corby offer Trigger Activated solutions for hoteliers who would like that little extra piece of mind.



British Designed

Our specialised range of hotel electricals & accessories is ever-evolving alongside styles & trends we see around the world. This is why we are confident we can accommodate any guest room environment.



Trigger Activated

Specially designed for hotels, the Stratus hair dryer works on trigger activation for guest safety. The trigger activation button is easy to use and friendlier to the environment.

SLEEK STORAGE

Corby of Windsor offer a range of storage solutions that can be used for various portable hair dryers. Most Corby hair dryers feature a specially coiled cable, which makes it much easier to store than conventional hair dryers. For example the Stratus Drawer Mounted Holder is designed to uniquely store the product so it is presented like it has never been used before.



Coiled Cable
Corby coiled cable hair dryers can extend from 0.8m to 2.1m in length. This makes them easy to store when compared to conventional hair dryers.



Bromley Hair Dryer Ring
Shown with Dalton 1600W hair dryer.



Clutch Hair Dryer Holder
Shown with Stratus 1875W hair dryer.



Bromley Hair Dryer Bag
Shown with the Bedford folding hair dryer. The bromley hair dryer bag is made from a soft yet durable material to protect the hairdryer when not in use.



CORBY HAIR DRYERS

Corby of Windsor offer a variety of hair dryers with a range of different power, speed and temperature settings. The Corby hair dryer collection has been designed and engineered to accommodate both the hotelier and their guests..

SKYE HAIR DRYER



- Features:**
- Ionic technology
 - LED light heat indicator
 - 2 speed / 4 temperature settings
 - Magnetic removable filter
 - Straight cable
 - 100,000 RPM
- Specification:**
- Black
1600W
0.50kg
73 dB
2.5m cable length

- Dimensions:**
- Height - 280mm
Width - 130mm
Depth - 70mm

MILTON 2000W HAIR DRYER



- Features:**
- Ionic technology
 - 2 speed / 3 temperature settings
 - Cool blow feature
 - Coiled cable
 - Removable filter
 - 18,000 RPM
- Specification:**
- Black
2000W
0.60kg
72 dB
0.8 - 2.1m cable length

- Dimensions:**
- Height - 265mm
Width - 270mm
Depth - 90mm

KENDAL 1600W HAIR DRYER / Wall Mounted



- Features:**
- Trigger activated
 - Wall mounted
 - 2 speed / 3 temperature settings
 - Coiled cable
 - Integrated filter
 - 13,000 RPM
- Specification:**
- White & Chrome
1600W
1.40kg
75 dB
Shaver socket: 0.05/230v & 0.1/115v

- Dimensions:**
- Height - 260mm
Width - 260mm
Depth - 135mm

LINTON 1200W HAIR DRYER / Wall / Drawer Mounted



- Features:**
- Trigger activated
 - Wall mounted
 - 2 speed / 2 temperature settings
 - Coiled Ca ble
 - Integrated filter
 - 13,000 RPM
- Specification:**
- White & Chrome
1200W
0.75kg
67 dB
0.8 - 2.1m cable length

- Dimensions:**
- Height - 180mm
Width - 200mm
Depth - 95mm

BEDFORD 2000W HAIR DRYER



- Features:**
- Folding design
 - 2 speed / 3 temperature settings
 - Cool blow feature
 - Coiled cable
 - Removable filter
 - 18,000 RPM
- Specification:**
- Black & Chrome
2000W
0.60kg
76 dB
0.8 - 2.1m cable length

- Dimensions:**
- Height - 280mm (130mm folded)
Width - 260mm
Depth - 90mm

STRATUS 1875W HAIR DRYER



- Features:**
- Ionic technology
 - Trigger activated
 - 2 speed / 3 temperature settings
 - Removable filter
 - Coiled cable
 - 18,000 RPM
- Specification:**
- Black
1875W
0.50kg
78 dB
0.8 - 2.1m cable length

- Dimensions:**
- Height - 240mm
Width - 178mm
Depth - 73mm

LINTON 1200W HAIR DRYER



- Features:**
- Trigger activated
 - Ergonomic handle design
 - 2 speed / 2 temperature settings
 - Integrated filter
 - Overheat protection
 - 13,000 RPM
- Specification:**
- White
1200W
0.40kg
67 dB
1.7m cable length

- Dimensions:**
- Height - 219mm
Width - 132mm
Depth - 80mm

DALTON 1600W HAIR DRYER



- Features:**
- Trigger activated
 - Ergonomic handle design
 - 2 speed / 3 temperature settings
 - Coiled cable
 - Integrated filter
 - 13,000 RPM
- Specification:**
- Black & Chrome
1600W
0.50kg
75 dB
0.8 - 1.8m cable length

- Dimensions:**
- Height - 260mm
Width - 155mm
Depth - 80mm



CORBY HAIR DRYER ACCESSORIES COLLECTION

Designed specifically by Corby, our range of accessories are designed to store hair dryers in different ways to suit a variety of hotel guest rooms.

SKYE HAIR DRYER CASE



- Features:**
- Accomodates the Skye hair dryer ONLY
 - Luxury PU leather finish
 - Velour interior finish
 - Magnetic buckle
 - International hair dryer symbol

Specification:
Black
0.80kg

Dimensions:
Height - 125mm
Width - 350mm
Depth - 110mm

STRATUS HAIR DRYER HOLDER / *Drawer Mounted*



- Features:**
- Accommodates the Stratus hair dryer ONLY
 - Suitable for drawer mounting
 - Cable tidy
 - 2 fixing locations
 - Easy to clean

Specification:
Black
0.30kg

Dimensions:
Height - 325mm
Width - 325mm
Depth - 45mm

CLUTCH HAIR DRYER HOLDER



- Features:**
- Suitable for the Stratus, Milton, Bedford & Dalton hair dryers
 - Wall mounted
 - Concealed fixings
 - Rigid & durable construction

Specification:
Black
0.20kg

Dimensions:
Height - 105mm
Width - 120mm
Depth - 100mm

BROMLEY RING HAIR DRYER HOLDER



- Features:**
- Suitable for the Bedford, Milton, & Dalton hair dryers
 - Wall mounted
 - Concealed fixings
 - Rigid & durable construction

Specification:
Black
0.10kg

Dimensions:
Height - 65mm
Width - 100mm
Depth - 90mm

BROMLEY HAIR DRYER BAG



- Features:**
- 100% Terylene (polyester)
 - Protective soft fabric
 - Discreet storage solution
 - Drawstring opening
 - International hair dryer symbol

Specification:
Black
0.06kg

Dimensions:
Height - 400mm
Width - 300mm
Depth - 4mm



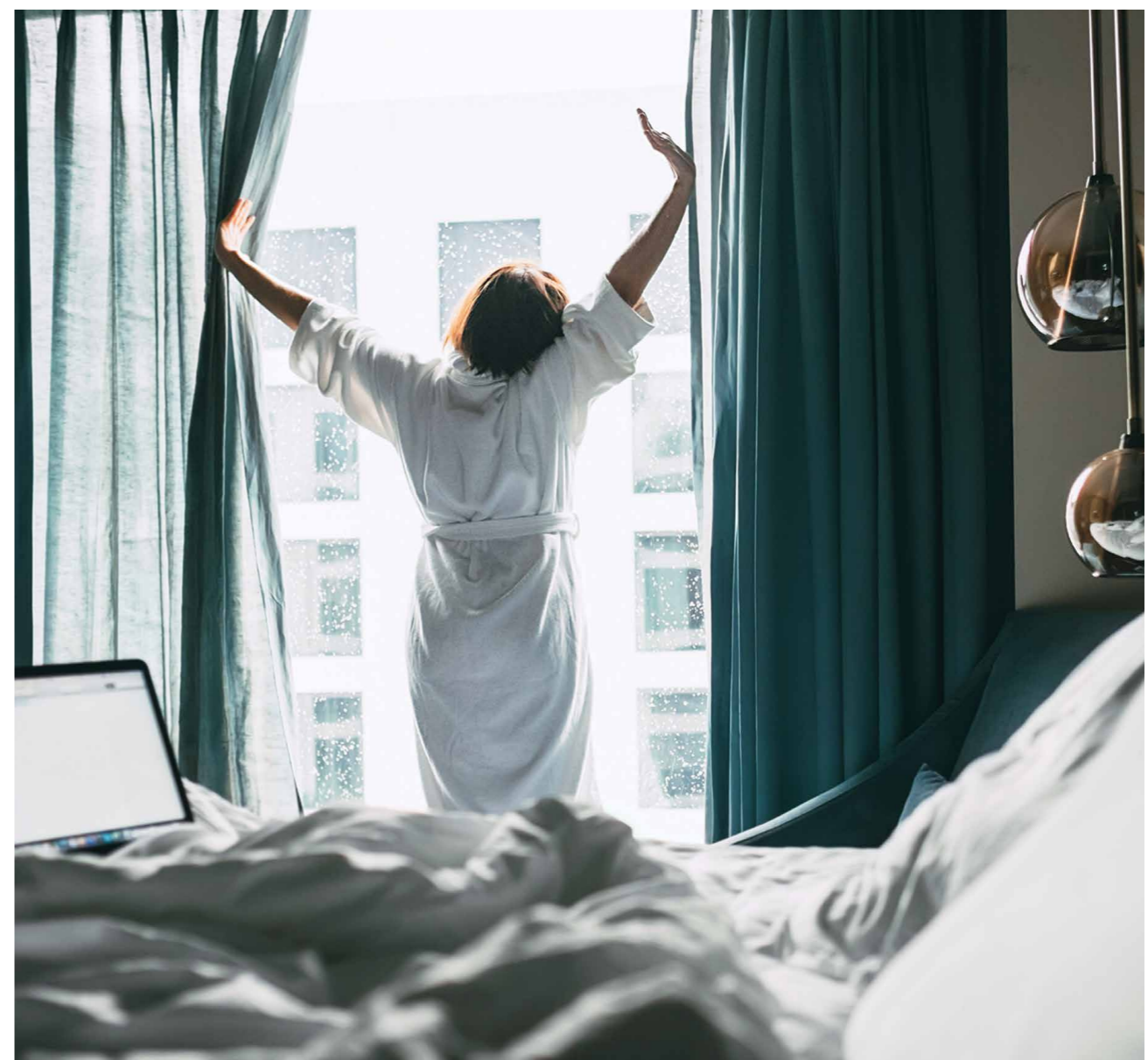


CORBY MINIBARS

The Eton E is the World's highest rated glass door minibar on the market.* Its innovative shelf design & use of space allow for its Silent Peltier Technology to cool it effectively, perfect for a night's stay. If your guests require a larger minibar, we offer 20L, 35L, 40L & 45L options with glass or solid lockable doors, that are sure to accommodate guest room furniture. *Checked on 20/06/23

TAKE IT EASY

As a supplier for some of the world's finest hotels, Corby of Windsor understand that relaxation and functionality are key to any high-end hotel stay. The Minibar Collection was specifically designed to include silent technology and fit a variety of spaces, ensuring your guests receive a good night's rest every time.



Peltier Silent Technology

Corby Minibars were designed to incorporate state of the art Peltier Silent Technology to ensure that guests have a restful stay.



Adjustable Cooling Technology

Corby minibars have an adjustable dial on the rear, allowing hoteliers to set the desired temperature of the contents.



THE ART OF FLEXIBILITY

Corby minibars are designed to be adaptable to open from either the left or right side, making them suitable for most guest room layouts.



Lockable Eton Door Minibar

All the solid door Eton Minibars are lockable for additional security & peace of mind for all guests.

Flexible Design

Eton solid door minibars can be fully integrated within furniture by fitting a 'minibar slider kit'. This creates a seamless look for minimalist styled interiors.

EMBRACING ELEGANCE

Embrace the best of guest room hospitality with the modern elegance of the Corby of Windsor minibar collection. Our minibars have a modern & clean aesthetic which creates a high quality hospitality experience to suit a variety of guest room spaces.



Low E Glass
Low - emissivity glass has a special coating designed to reflect heat back into the room, making Eton Minibars extra cold.



CORBY MINIBARS

The Corby of Windsor Minibar Collection offers a range of sizes and styles that are perfect for the hotel guest room. Each minibar is tested for functionality and quality; designed with precision to fit beautifully into a variety of hotel guest rooms.

HENLEY 45L MINIBAR \ Solid Door



- Features:**
- Drawer open minibar
 - Adjustable shelving systems
 - Silent operation
 - Interior LED light
- Specification:**
- Black
45L
14kg
58W
R600a Refrigerant
Insulation - Cyclopentane

Dimensions:

Height - 425mm
Width - 490mm
Depth - 460mm

Capacity Guide:



- 3 x Chocolate Bars
3 x Breakfast Bars
2 x 200g Chocolate Treat Bags
7 x Mini Cans
8 x 250ml Tall Cans
4 x 330ml Cans
3 x 330ml Bottles
- 1 x 1L Water Bottle or
1 x 750ml Wine bottle

ETON 40L MINIBAR \ Solid Door

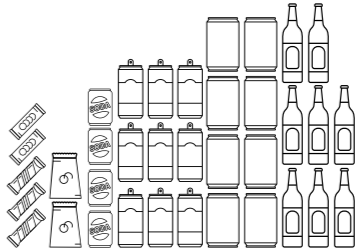


- Features:**
- Lockable door (2 keys supplied)
 - Left or right opening
 - Silent operation
 - Interior LED light
- Specification:**
- Black & White
40L
11.40kg
58W
R600a Refrigerant
Insulation - Cyclopentane

Dimensions:

Height - 560mm
Width - 400mm
Depth - 425mm

Capacity Guide:



- 3 x Chocolate Bars
2 x Breakfast Bars
2 x 200g Chocolate Treat Bags
4 x Mini Cans
6 x 250ml Tall Cans
4 x 330ml Cans
7 x 330ml Bottles

RADLEY 40L MINIBAR \ Solid Door

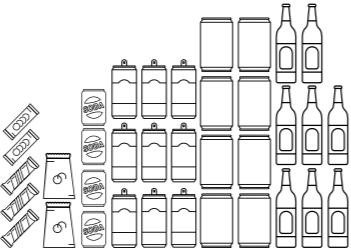


- Features:**
- Retro design
 - Left or right opening
 - Silent operation
 - Interior LED light
- Specification:**
- Black & White
40L
12.30kg
58W
R600a Refrigerant
Insulation - Cyclopentane

Dimensions:

Height - 560mm
Width - 400mm
Depth - 425mm

Capacity Guide:



- 3 x Chocolate Bars
2 x Breakfast Bars
2 x 200g Chocolate Treat Bags
4 x Mini Cans
6 x 250ml Tall Cans
4 x 330ml Cans
7 x 330ml Bottles

ETON 40L MINIBAR \ Glass Door

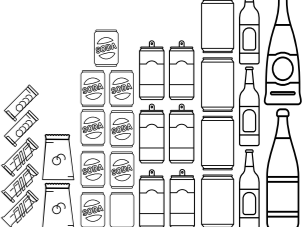


- Features:**
- Adjustable shelving systems
 - Low E glass
 - Silent operation
 - Interior LED light
 - Left or right opening
- Specification:**
- Black & White / Black
40L
15.80kg
58W
220-240V ~ 50-60Hz
R600a refrigerant
Insulation - Cyclopentane

Dimensions:

Height - 570mm
Width - 400mm
Depth - 410mm

Capacity Guide:



- 3 x Chocolate Bars
2 x Breakfast Bars
2 x 200g Chocolate Treat Bags
9 x Mini Cans
6 x 250ml Tall Cans
4 x 330ml Cans
3 x 330ml Bottles
1 x 1L Water Bottle
1 x 750ml Wine Bottle

RADLEY 40L MINIBAR \ Solid Door



- Features:**
- Retro design
 - Left or right opening
 - Silent operation
 - Interior LED light
- Specification:**
- Cream & White
40L
12.30kg
58W
R600a Refrigerant
Insulation - Cyclopentane

Dimensions:

Height - 560mm
Width - 400mm
Depth - 425mm

Capacity Guide:



- 3 x Chocolate Bars
2 x Breakfast Bars
2 x 200g Chocolate Treat Bags
4 x Mini Cans
6 x 250ml Tall Cans
4 x 330ml Cans
7 x 330ml Bottles

ETON 35L MINIBAR \ Solid Door

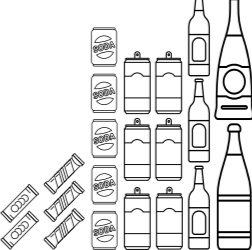


- Features:**
- Lockable door (2 keys supplied)
 - Left or right opening
 - Silent operation
 - Interior LED light
- Specification:**
- Black & White
35L
10.10kg
R600a Refrigerant
Insulation - Cyclopentane

Dimensions:

Height - 475mm
Width - 385mm
Depth - 455mm

Capacity Guide:



- 3 x Chocolate Bars
2 x Breakfast Bars
6 x Mini Cans
6 x 250ml Tall Cans
3 x 330ml Bottles
1 x 1L Water Bottle
1 x 750ml Wine Bottle

ETON 35L MINIBAR \ Glass Door



- Features:**
- Adjustable shelving systems
 - Low E glass
 - Silent operation
 - Left or right opening
- Specification:**
- Black & White / Black
 - 35L
 - 12.90kg
 - 58W
 - R600a Refrigerant
 - Insulation - Cyclopentane
- Dimensions:**
- Height - 485mm
 - Width - 385mm
 - Depth - 450mm

Capacity Guide:

- 3 x Chocolate Bars
- 2 x Breakfast Bars
- 6 x Mini Cans
- 6 x 250ml Tall Cans
- 3 x 330ml Bottles
- 1 x 1L Water Bottle
- 1 x 750ml Wine Bottle

ETON E MINIBAR \ Glass Door



- Features:**
- B energy rating
 - Low E glass
 - Silent operation
 - Left or right opening
- Specification:**
- Black
 - 10L
 - 9.96kg
 - 58W
 - R600a Refrigerant
 - Insulation - Cyclopentane
- Dimensions:**
- Height - 440mm
 - Width - 360mm
 - Depth - 280mm

Energy Rating:

B

Capacity Guide:

- 3 x Chocolate Bars
- 2 x Breakfast Bars
- 6 x Mini Cans
- 2 x 330ml Cans
- 1 x 1L Water Bottle

ETON 20L MINIBAR \ Solid Door



- Features:**
- Lockable door (2 keys supplied)
 - Left or right opening
 - Silent operation
 - Interior LED light
- Specification:**
- Black & White
 - 20L
 - 8.60kg
 - 58W
 - R600a Refrigerant
 - Insulation - Cyclopentane
- Dimensions:**
- Height - 430mm
 - Width - 360mm
 - Depth - 390mm

Capacity Guide:

- 3 x Chocolate Bars
- 2 x Breakfast Bars
- 6 x 250ml Tall Cans
- 3 x 330ml Bottles
- 2 x 1L Water Bottle

MINIBAR SLIDER KIT



- Features:**
- Enables minibar integration into guestroom cabinets
 - Suitable for all Eton solid door minibars
- Specification:**
- Black
 - 0.32kg
- Dimensions:**
- Height - 45mm
 - Width - 247mm
 - Depth - 9mm

ETON 20L MINIBAR \ Glass Door



- Features:**
- Adjustable shelving systems
 - Low E glass
 - Silent operation
 - Left or right opening
- Specification:**
- Black & White / Black
 - 20L
 - 11.70kg
 - 58W
 - R600a Refrigerant
 - Insulation - Cyclopentane
- Dimensions:**
- Height - 440mm
 - Width - 360mm
 - Depth - 385mm

Capacity Guide:

- 3 x Chocolate Bars
- 2 x Breakfast Bars
- 6 x 250ml Tall Cans
- 3 x 330ml Bottles
- 2 x 1L Water Bottle





SAFE & SOUND

As a supplier to some of the world's finest hotels, Corby of Windsor understands that relaxation and peace of mind are integral to any hotel stay. Our Corby Safes are specifically designed to fit a variety of spaces and are constructed with heavy duty steel doors.



CORBY SAFES

Safe & robust, our range of safes are designed to be secure & easy to use around the world. We offer different levels of security to make hotels & hotel guests feel at ease that their belongings are safe. Our CEU device allows hoteliers to set passcodes, change lighting and digitally record up to 125 passcodes, in the unlikely event of theft.



Touch Tone

All Corby safes are digitally controlled with touch tone display panels, making it very convenient for hotel guests to store their valuables.

PEACE OF MIND

The Corby Safes Collection is designed & engineered to be secure & easy to use around the world. We offer different levels of security to make hoteliers & hotel guests feel at ease that their belongings are safe. All safes are fitted with 18mm electronically motorised locking bolts.



Automatic Locking System

Each safe is fitted with heavy duty motorised locking bolts that can only be opened with a pass code or a unique over-ride key (supplied).



CEU (Computer Emergency Unit)

Our CEU device allows hoteliers to set passcodes, change lighting & digitally record up to 125 pass codes, in the unlikely event of theft.

CORBY SAFES & CEU

The Corby of Windsor Safes Collection offers a range of sizes and styles that are perfect for the hotel guest room. Each safe is tested for functionality, quality and designed with precision to fit beautifully into a variety of hotel guest rooms.

WESTMINSTER DIGITAL 17" LAPTOP SAFE



- Features:**
- Suitable for laptops up to 17"
 - Digital braille control panel
 - Supplied with key & batteries
 - Spring assisted door
 - Compatible with CEU

Specification:
Black
11.80kg
4 x AA Batteries
4mm steel door
1.5mm steel body

Dimensions:
Height - 190mm
Width - 500mm
Depth - 380mm

WESTMINSTER DIGITAL 15" LAPTOP SAFE



- Features:**
- Suitable for laptops up to 15"
 - Digital braille control panel
 - Supplied with key & batteries
 - Spring assisted door
 - Compatible with CEU

Specification:
Black
10.50kg
25L
4 x AA Batteries
4mm steel door
1.5mm steel body

Dimensions:
Height - 195mm
Width - 430mm
Depth - 370mm

MAYFAIR DIGITAL OPEN TOP SAFE



- Features:**
- Suitable for laptops up to 15"
 - Digital braille control panel
 - Supplied with key & batteries
 - Spring assisted door
 - Compatible with CEU

Specification:
Black
10kg
11L
4 x AA Batteries
3mm steel door
1.5mm steel body

Dimensions:
Height - 130mm
Width - 400mm
Depth - 350mm

CEU / Computer Emergency Unit



- Features:**
- Holds 125 passcodes
 - Cable for CEU to computer included in pack
 - Supplied with batteries
 - Compatible with the Westminster & Mayfair Safes

Specification:
Black
0.30kg
4 x AAA Batteries

Dimensions:
Height - 28mm
Width - 180mm
Depth - 78mm

WHITEHALL DIGITAL COMPACT SAFE



- Features:**
- Suitable for laptops up to 14"
 - Supplied with key & batteries
 - Spring assisted door

Specification:
Black
9kg
18L
4 x AA Batteries
4mm steel door
1.5mm steel body

Dimensions:
Height - 190mm
Width - 420mm
Depth - 300mm





CORBY BEDROOM COLLECTION

Our complimentary range has been specially selected to complete the room. These include tissue box holders, double layer bins, solid wood luggage racks and many more guestroom products.

MIX & MATCH

Our solid wood range includes welcome trays, clothes hangers and luggage racks. These have been colour matched so you can be assured that the colour and finish is consistent throughout the room.



Guest Hangers

Solid wood hangers are available in hooked or security pin options in three different colours.



Light Wood



Dark Wood



Black

Luggage Racks

Constructed from solid wood, our collection of luggage racks have been tested to hold weight up to 50kg. The chrome inlays and durable nylon straps provide protection and enable them to be stored away.



Light Wood



Dark Wood



Black

MAKING RECYCLING EASY

With 22 waste management solutions, hoteliers can choose how they wish to recycle. The unique Thornton recycle bin inserts can be used independently or as a set, with or without a bag liner. They feature printed international icons on top to illustrate to guests what items can be placed inside.



Bedroom Bin Recycling
Designed to be used with our single or double layer bins, the new recycling bin inserts have been cleverly designed to be used independently or as a pair. The unique handle displays internationally recognised icons for 'general waste' and 'recycling', making it easy to understand in any guest room around the world. The handle has also been designed with 2 slots that allow a bin bag to be manoeuvred around the handle so the icon isn't covered.

CORBY BEDROOM BINS

Our range of bins has been specifically selected with the hotel guest in mind. Our range now includes a variety of uniquely designed recycling options including the Newport Dual Recycling Bin and the Thornton Bin Insert.

HIGHLAND 9L DOUBLE LAYER BIN



Features:

- Dual layer bin
- Steel collar
- Luxury PU leather finish
- Durable construction
- Rubber base

Specification:

Black
1.36kg

Dimensions:

Height - 260mm
Width - 230mm
Depth - 223mm

THORNTON 9L SINGLE LAYER BIN



Features:

- Single layer bin
- Durable construction
- Rubber base

Specification:

Brushed Steel / Black / White
0.70kg

Dimensions:

Height - 260mm
Width - 223mm
Depth - 223mm

NEWPORT DUAL RECYCLING BIN



Features:

- International recycling icons
- Removable collar and inserts
- Durable construction

Specification:

Brushed Steel, Green & Black/
Black, Green & Black
1.96kg
6L + 6L

Dimensions:

Height - 365mm
Width - 192mm
Depth - 272mm

THORNTON BIN INSERT



Features:

- Printed sorting guide
- Suitable for Corby single or double layer bins
- Designed to be used with or without bags
- Easy to clean

Specification:

Black (General) / Green (Recycling)
0.20kg

Dimensions:

Height - 250mm
Width - 205mm
Depth - 120mm

THORNTON 9L DOUBLE LAYER BIN



Features:

- Dual layer bin
- Steel collar
- Flame retardant
- Durable construction
- Rubber base

Specification:

Brushed Steel / Black
1.30kg

Dimensions:

Height - 260mm
Width - 230mm
Depth - 223mm

CORBY BEDROOM HANGERS

The Guest Hanger Collection includes solid wood hangers in three styles and three colours, along with our satin hanger available in one elegant colour. These durable and stylish hangers are designed to keep your garments organized and beautifully displayed.

CLIFFORD SUIT HANGER



Features:

- Solid wood
- Standard hook
- Broad ends
- Trouser bar

Specification:

Light Wood / Dark Wood / Black
0.23kg

Dimensions:

Height - 227mm
Width - 450mm
Depth - 60mm

CHELSEA GUEST HANGER



Features:

- Solid wood
- Standard hook
- Garment hooks
- Trouser bar

Specification:

Light wood / Dark Wood / Black
0.10kg

Dimensions:

Height - 215mm
Width - 445mm
Depth - 12mm

BURLINGTON GUEST HANGER WITH CLIPS



Features:

- Solid wood
- Standard hook
- Garment clips
- Garment hooks

Specification:

Light Wood / Dark Wood / Black
0.14kg

Dimensions:

Height - 265mm
Width - 445mm
Depth - 27mm

CHELSEA GUEST HANGER WITH SECURITY PIN



Features:

- Solid wood
- Security pin
- Trouser bar
- Garment hooks

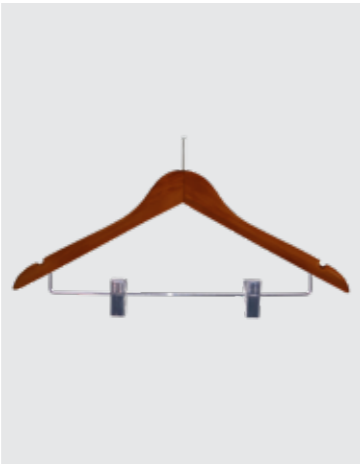
Specification:

Light Wood / Dark Wood / Black
0.10kg

Dimensions:

Height - 215mm
Width - 445mm
Depth - 12mm

BURLINGTON GUEST HANGER WITH CLIPS AND SECURITY PIN



Features:

- Solid wood
- Security pin
- Garment clips
- Garment hooks

Specification:

Light Wood / Dark Wood / Black
0.14kg

Dimensions:

Height - 265mm
Width - 445mm
Depth - 27mm

SALTAIRE SATIN GUEST HANGER



Features:

- Luxury black satin
- Steel hook
- Bow detail
- Garment hooks

Specification:

Black
0.06kg

Dimensions:

Height - 145mm
Width - 383mm
Depth - 40mm

HANGER SECURITY PIN RING



Features:

- Compatible with Corby security pin guest hangers
- Durable material

Specification:

Silver metal
0.01kg




Dimensions:

Height - 65mm
Width - 50mm
Depth - 10mm

CORBY LUGGAGE RACKS

Constructed from solid wood, our collection of luggage racks have been tested to hold weight up to 50kg. The chrome inlays and durable nylon straps provide protection and enable them to be stored away.

YORK LUGGAGE RACK



Features:

- Durable nylon straps
- Chrome inlays
- Solid wood construction
- Foldable & easy to store
- Holds up to 50kg


Specification:
Light Wood / Dark Wood / Black
3.49kg

Dimensions:

(Open)	(Folded)
Height - 485mm	Height - 600mm
Width - 655mm	Width - 655mm
Depth - 385mm	Depth - 150mm



BUXTON LUGGAGE RACK



Features:

- Made of BUSA bamboo
- Durable nylon straps
- Matt wood grain finish
- Designed to store in a wardrobe
- Holds up to 50KG

Specification:
Black
2.80kg

Dimensions:

(Open)	(Folded)
Height - 460mm	Height - 585mm
Width - 450mm	Width - 450mm
Depth - 405mm	Depth - 120mm



ASHTON LUGGAGE RACK WITH BACK



Features:

- Tubular steel construction
- Durable finish
- Durable nylon straps
- Foldable & easy to store
- Holds up to 50kg

Specification:
Chrome & Black / Black
2.36kg

Dimensions:

(Open)	(Folded)
Height - 680mm	Height - 865mm
Width - 620mm	Width - 620mm
Depth - 515mm	Depth - 75mm

ASHTON LUGGAGE RACK WITHOUT BACK



Features:

- Tubular steel construction
- Durable finish
- Durable nylon straps
- Foldable & easy to store
- Holds up to 50kg

Specification:
Chrome & Black / Black
1.90kg

Dimensions:

(Open)	(Folded)
Height - 480mm	Height - 630mm
Width - 620mm	Width - 620mm
Depth - 440mm	Depth - 55mm

CORBY BEDROOM ITEMS

As part of our extended range, you will find other quality hotel products available, including our new Regent Alarm Clock and Tower Fan.

HIGHLAND CUBE TISSUE BOX HOLDER



- Features:**
- Luxury PU leather finish
 - Magnetic base
 - Suitable for bathrooms and bedrooms
 - Durable PVC construction

Specification:
Black
1.20kg

Dimensions:
Height - 155mm
Width - 137mm
Depth - 137mm

HIGHLAND RECTANGULAR TISSUE BOX HOLDER



- Features:**
- Luxury leather finish
 - Magnetic base
 - Suitable for bathrooms and bedrooms
 - Durable PVC construction

Specification:
Black
1.18kg

Dimensions:
Height - 74mm
Width - 246mm
Depth - 137mm

DEVON RECTANGULAR TISSUE BOX HOLDER



- Features:**
- ABS constructed
 - Detachable base
 - Wall or surface mounted

Specification:
Chrome / Black
0.35kg

Dimensions:
Height - 60mm
Width - 255mm
Depth - 140mm

BUXTON CUBE TISSUE BOX HOLDER



- Features:**
- Made of BUSA bamboo
 - Matt wood grain finish
 - Suitable for bathrooms and bedrooms

Specification:
Black
0.54kg

Dimensions:
Height - 146mm
Width - 142mm
Depth - 142mm

BUXTON RECTANGULAR TISSUE BOX HOLDER



- Features:**
- Made of BUSA bamboo
 - Matt wood grain finish
 - Suitable for bathrooms and bedrooms

Specification:
Black
0.54kg

Dimensions:
Height - 70mm
Width - 258mm
Depth - 142mm

DEVON CUBE TISSUE BOX HOLDER



- Features:**
- ABS constructed
 - Detachable base
 - Easy to clean

Specification:
Chrome / Black
0.30kg

Dimensions:
Height - 130mm
Width - 135mm
Depth - 135mm



REGENT ALARM CLOCK



- Features:**
- Wireless Charge
 - 12/24 hour
 - Digital Display
 - 2x USB A ports & 1x USB C port
 - 2x 5W speakers
 - Bluetooth
- Specification:**
- Black
0.50kg
>65dB
1.25m cable length
- Dimensions:**
- Height - 70mm
Width - 135mm
Depth - 125mm

TOWER FAN



- Features:**
- 70° rotation
 - Manual controls
 - Compact design
 - 3 speed settings
 - Floor standing
 - 29"
- Specification:**
- Black
50W
2.60kg
- Dimensions:**
- Height - 740mm
Width - 260mm
Depth - 260mm

BRIGHTON LED TORCH



- Features:**
- Solid aluminium construction
 - Battery powered
 - Ergonomic design
 - Anti-theft
 - LED torch light
 - Wall mountable
- Specification:**
- Black & Chrome
3 x AA batteries
0.35kg
- Dimensions:**
- Height - 59mm
Width - 192mm
Depth - 60mm

NORTHAMPTON SHOE HORN



- Features:**
- Real wood handle
 - Hanging loop
 - Durable material
- Specification:**
- Black
0.08kg
- Dimensions:**
- Height - 382mm
Width - 37mm
Depth - 11mm

SKIPTON CLOTHES BRUSH



- Features:**
- 100% horse hair bristles
 - Real wood handle
 - Hanging loop
 - Durable material
- Specification:**
- Black
0.14kg
- Dimensions:**
- Height - 376mm
Width - 60mm
Depth - 36mm





CORBY BATHROOM COLLECTION

Our bathroom items include a variety of mirrors, digital scales, and essential hygiene products to enhance functionality and ensure cleanliness in the guest bathroom. Elevate your hotel bathrooms with our thoughtfully designed products, which provide both comfort and sophistication for every guest.

RELAX & UNWIND



Sandwell Battery-Free Scales

Our glass scales are battery-free and promote an eco-friendly lifestyle. They feature a stylish glass surface and a modern design, enhancing the aesthetic of any space. These scales provide precise weight measurements without contributing to electronic waste. Lightweight and easy to use, they support your health while being environmentally friendly.

Winchester Mirrors

The elegant Winchester Mirror range includes eight mirrors available in two classic colour options. Each mirror boasts a double-sided design with 5x magnification, making it ideal for precise grooming. The adjustable head allows for versatile positioning, making it a perfect choice for hoteliers seeking both style and practicality.



CLEAN & SIMPLE

Introducing our stylish and convenient bathroom products. The Sana Toilet Brush features an easy to clean silicone head and can be wall-mounted to keep floors tidy. The Croft 3L Bathroom Pedal Bin, is perfect for hotel rooms, allowing guests to dispose of waste hygienically with its foot pedal.



Croft 3L Pedal Bins

The Croft 3L bathroom pedal bin is an essential addition to any hotel room, designed in three classic colours to enhance the guest experience while ensuring cleanliness and convenience. These bins feature a foot-operated pedal that allows guests to dispose of waste without touching the lid, promoting a more hygienic environment.



Sana Toilet Brush

The flexible silicone head has been designed to get to those hard to reach areas. The tiny bristles have been developed to be anti-drip and anti-clog, making cleaning the toilet less unpleasant.



CORBY BATHROOM ITEMS

The Corby Bathroom Items Collection offers mirrors, digital scales, and essential hygiene products that enhance the guest bathroom experience. Designed for both style and functionality, it creates a clean, comfortable, and sophisticated environment for every guest.

WINCHESTER MIRROR / *FREE STANDING*



- Features:**
- Double sided mirror
 - 360 rotation & tilt feature
 - Extendable arm (Chrome only)
 - 1x & 5x magnification

Specification:
Chrome / Matt Black
0.95kg

Dimensions:
Height - 340 - 420mm
Width - 230mm
Depth - 150mm

WINCHESTER LED MIRROR / *WALL MOUNTED*



- Features:**
- LED illuminated
 - Double sided mirror
 - Auto cut-off
 - Touch screen button
 - Durable nylon hinge
 - 1x & 5x magnification
 - 360 rotation & tilt feature
 - Supplied with batteries

Specification:
Chrome/ Matt Black
4 x AAA batteries
0.95kg

Dimensions:
Height - 320mm
Width - 255 - 435mm
Depth - 125mm

WINCHESTER LED MIRROR / *FREE STANDING*



- Features:**
- LED illuminated
 - Double sided mirror
 - Auto cut-off
 - Touch screen button
 - Extendable arm (Chrome only)
 - 1x & 5x magnification
 - Supplied with batteries

Specification:
Chrome / Matt Black
4 x AAA batteries
1.10kg

Dimensions:
Height - 340 - 420mm
Width - 230mm
Depth - 150mm

HELMSLEY DIGITAL BATHROOM SCALES



- Features:**
- LCD digital display
 - Tempered glass
 - Slimline design
 - Anti-slip rubber feet
 - Imperial & metric weight settings

Specification:
Grey / Black
1.50kg
2 x AAA batteries
6mm glass

Dimensions:
Height - 302mm
Width - 302mm
Depth - 22mm

WINCHESTER MIRROR / *WALL MOUNTED*



- Features:**
- Double arm mirror design
 - Double sided mirror
 - Durable nylon hinge
 - 1x & 5x magnification
 - 360 rotation & tilt feature

Specification:
Chrome / Matt Black
0.80kg

Dimensions:
Height - 320mm
Width - 255 - 435mm
Depth - 125mm

SANDWELL BATTERY-FREE SCALES



- Features:**
- Battery-free
 - Tempered glass
 - LCD digital display
 - Anti-slip rubber feet
 - Imperial & metric weight settings

Specification:
White & Clear Glass
1.30kg
6mm glass

Dimensions:
Height - 300mm
Width - 310mm
Depth - 45mm

SANA TOILET BRUSH / *FREE STANDING OR WALL MOUNTED*



- Features:**
- Hygienic silicone bristles
 - Anti drip brush head
 - Flexible brush head
 - Free standing or wall mountable
 - Slimline design

Specification:
Chrome & Black / Black
0.30kg

Dimensions:
Height - 390mm
Width - 115mm
Depth - 70mm



KENT HYGIENE BAG DISPENSER / *WALL MOUNTED*



- Features:**
- Wall mountable
 - Detachable base
 - ABS construction
 - Easy to install
 - Easy to clean

Specification:
Chrome / Black
0.08kg

Dimensions:
Height - 138mm
Width - 99mm
Depth - 28mm

CROFT 3L PEDAL BIN



- Features:**
- Compact size
 - Inner layer bin
 - Grippped foot pedal
 - Easy to clean
 - Soft close
- Specification:**
Polished Steel / Black / White
0.63kg

Dimensions:
Height - 280mm
Width - 205mm
Depth - 255mm

DOVER BATH MAT

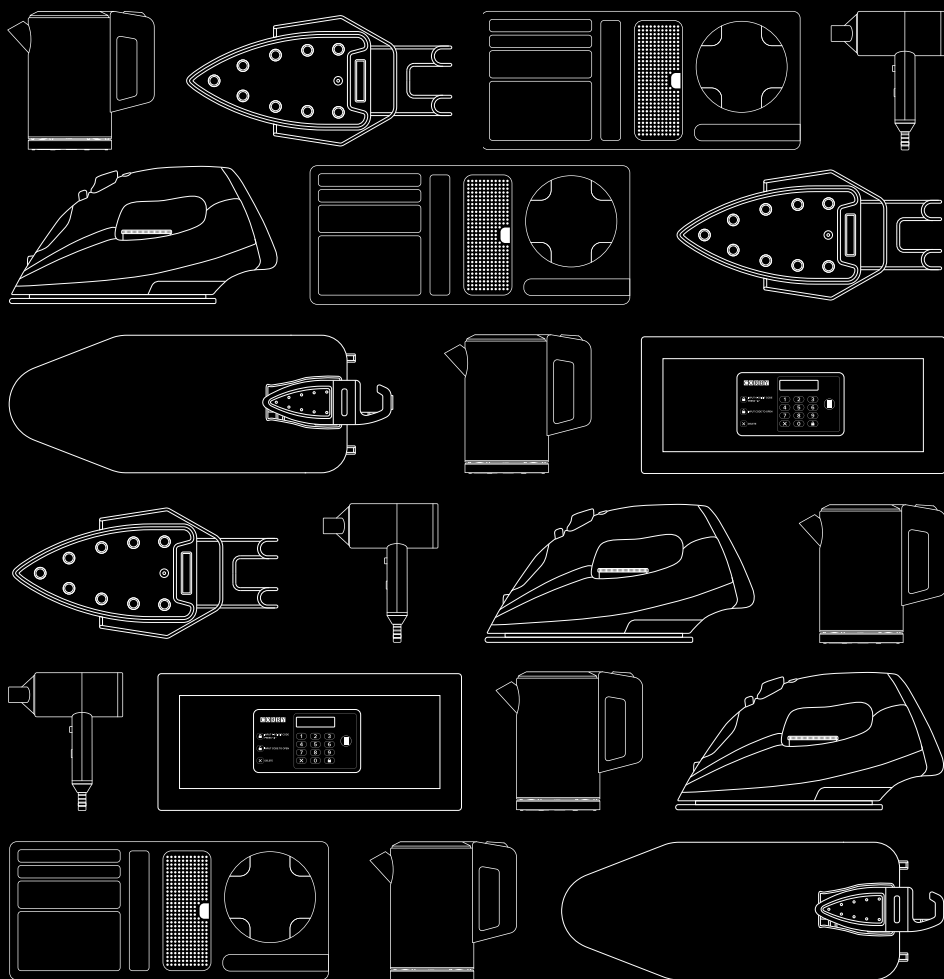


- Features:**
- Easy to clean
 - Textured rubber
 - Anti slip suction pads

Specification:
White
0.77kg

Dimensions:
Height - 740mm
Width - 345mm
Depth - 10mm





DESIGNED FOR HOTELS

CORBY
Of WINDSOR

WWW.CORBYOFWINDSOR.COM

2025/26 Edition